



Become a Leading Intelligent Entrance Solutions Provider of the World



Shanghai Fastlink Door Co.,Ltd.

Tel: +86 021 64601300

After-sales Hotline: +86 400 880 6460

Email: sales@fastlinkchina.com

Official Website: www.fastlinkus.net



BECOME A LEADING INTELLIGENT ENTRANCE SOLUTIONS PROVIDER OF THE WORLD

HIGH SPEED DOOR

WWW.FASTLINKUS.NET



ABOUT FASTLINK

Shanghai Fastlink Door Co., Limited, a national high-tech enterprise titled "Shanghai Famous Brand" , is an access intelligence solution provider and manufacturer of industrial doors and handling equipment. We independently develop and manufacture products including insulation sectional doors, single panel sectional doors, PVC high speed doors, cold storage high speed doors, dock levelers, dock shelters and have a number of technology patents and European CE certification.

Since its establishment in 2004, Fastlink has already become a strong brand in the industry and won trust and recognition of customers in many industries and fields with excellent product quality and perfect service support. It maintains good partnership with well-known enterprises such as GLP, Vanke, ESR, Goodman, Mapletree, Yuepei, Ping An Properties, Sinotrans, Shenzhen International, JD.com, Cainiao, Hema, Meituan, GFS , Mercedes-Benz, BMW, Geely, Bayer, BASF, Intco Medical, CATL, Huayou Cobalt.

In 2010, Fastlink built a modern factory of 30,000 square meters in Jiading, Shanghai, and introduced German technology and production lines, which laid a solid foundation for the company to become a leading industrial equipment manufacturer in China.

At present, Fastlink has established a sales network and after-sales service system in more than 20 cities nationwide. Meanwhile, we have fully introduced ERP and CRM systems, and realized the "information system + cloud platform" by the technology of the Internet of Things, so as to comprehensively improve order fulfillment and service quality.

With the international management mechanism, the design and development teams with "innovation as the first competitiveness" , and the service network integrating marketing, installation and after-sales service, Fastlink is steadily growing into a leading intelligent entrance solutions provider of the world.

CONTENTS

01	Advantages of Fastlink High Speed Doors	P1
02	HSV-HAS Spiral High Speed Door	P3
03	HSR-IPB Interior High Speed Rolling Shutter Door	P6
04	HSR-EPB Exterior High Speed Rolling Shutter Door	P7
05	HSR-SPB High Speed Stacking Door	P09
06	HSR-IPM High Speed Insulated Rolling Shutter Door	P10
07	HSR-IPP Cold Storage High Speed Rolling Shutter Door	P11
08	HSS-DEY Cold Storage High Speed Sliding Door	P14
09	Motor Control System & Color Cards	P17
10	Fastlink's Strategic Partners	P18
11	Fastlink's Advantages	P19



FASTLINK HIGH SPEED DOOR

**QUICK OPENING, ANTI-COLLISION RESET
SAFETY & RELIABILITY, ZERO MAINTENANCE**

OUR MOTTO

Only with the management concept of international standards can we obtain wider development space. Fastlink products and services can even satisfy the most demanding customers.



10 YEARS

10-year Supply Guarantee for Original Accessories

All important parts, such as the door panel, track, torsion spring and electric control system, are designed and manufactured by Fastlink without outsourcing to ensure long-term service to customers.



Product Development

The new product development, product update and detail improvement in Shanghai Fastlink have been consistently maintained. We have a better understanding of customer needs. Through continuous iteration of our R&D team, Fastlink products remain state of the art in the market.



Intelligent Production

Automated production guarantees timely delivery of orders and product quality. By constructing an information system, Fastlink realizes the connection between the ERP system and the production line to ensure product quality and production efficiency.



Quality Management

In order to create best of class products, Fastlink has achieved perfect control over every link, and strictly followed the ISO9001:2008 standard of quality management system throughout research, development, production, delivery and installation.



Reliable Service

The professional after-sales service team provides customers with reliable patrol, maintenance and repair services. With the Internet of Things technology and the construction of the information system, passive service is turned into active service, greatly improving the efficiency of after-sales service.



Professional Consultation

Provide customers with a full range of pre-, during and after- sales services, including comprehensive consultations from the preliminary project design and technical clarification to the installation and acceptance.



Multiple Opening Modes

The opening mode can be divided into spiral suction type, elliptical suction type and smooth type. Double spiral turbine and elliptical turbine guide rail are adopted, and the door body runs quietly and smoothly. Strong bearing capacity, fast running, without contact, friction or wear between the door panel and connector when rolled up. If the space above is insufficient, a smooth guide rail can be used.

HSV-HAS SPIRAL HIGH SPEED DOOR

HIGHER SPEED & FREQUENT OPENING

INNOVATIVE TECHNOLOGY & DESIGN, EMBODIED IN EVERY DETAIL

>>> TECHNICAL PARAMETERS

- The newly developed HSV-HAS spiral high speed door can realize real high-speed start, and no matter how frequently it is opened, the time of indoor and outdoor air convection can be minimized.
- Its innovative reeling technology reduces the friction between curtain sheets. While reducing noise, it also reduces the loss between curtain sheets and realizes lower maintenance cost.
- It can be used as either an external or internal door, for applications that require frequent and fast opening and clean environment.
- **Typical application industries:** automobile manufacturing, food production & packaging and pharmaceutical production.

Optional Requirements	Specifications
Door imensions	Min.1200mm x H2000mm(3'11"W * 6'7"H) (W x H)
	Max. 6,000 mm x 6,000 mm (19'8" x 19'8") (W x H)
Opening speed	Max.2.5m/s
Door panel material	Aluminum alloy panel filled with polyurethane foam
Door panel thickness	42mm
Door panel height	220mm
Window	Acrylic visible window; standard configuration: 2 rows
Power supply	Single-phase 220 V, 50/60 Hz
Door panel color	RAL 9002 (Grey White)/RAL 9006 (White Aluminium)/Customized
Track color	RAL 9002 (Grey White)/RAL 9006 (White Aluminium)/RAL 7015 (Slate Grey)/Stainless steel/Customized
Motor cover	Optional
Winding shaft cover	Optional
Installation position	Exterior/Interior
Door opening options	Remote control/Three control buttons/Geomagnetic sensor/Radar/Pull cord switch/Device interconnection/Blue-tooth/License plate recognition
Service life	More than 1.5 million cycles
Wind resistance level	Level 12 (GB/T 29734)



Manual Emergency Device

In case of a power outage, the electric control system can turn on the motor brake at any time and lift the door body with the balance system, which can effectively solve the failure to open the door body caused by power outage or fault.



Energy-efficient Design

Aluminum alloy door curtain is connected by EPDM rubber, forming tight sealing between curtain sheets to prevent dust and isolate the impact of severe weather outside, thus saving energy.

All-round Safety Protection

Photoelectricity, light curtains and airbags are available. Infra-red electric eyes are equipped for safety protection, and the door body will remain open with obstacles below; if there is an object passing through when the door body is descending, the door will rise to the open position, and delay the descent till there is no obstacle below; Optional light curtains with multiple infrared beam points can be equipped to effectively enhance safety.The bottom is equipped with safety protection edge. When the door body drops and touches an object under infrared safety protection, it will quickly rebound to the open position, effectively avoiding safety accidents.





**ECONOMIC & DURABLE
STABLE PERFORMANCE**

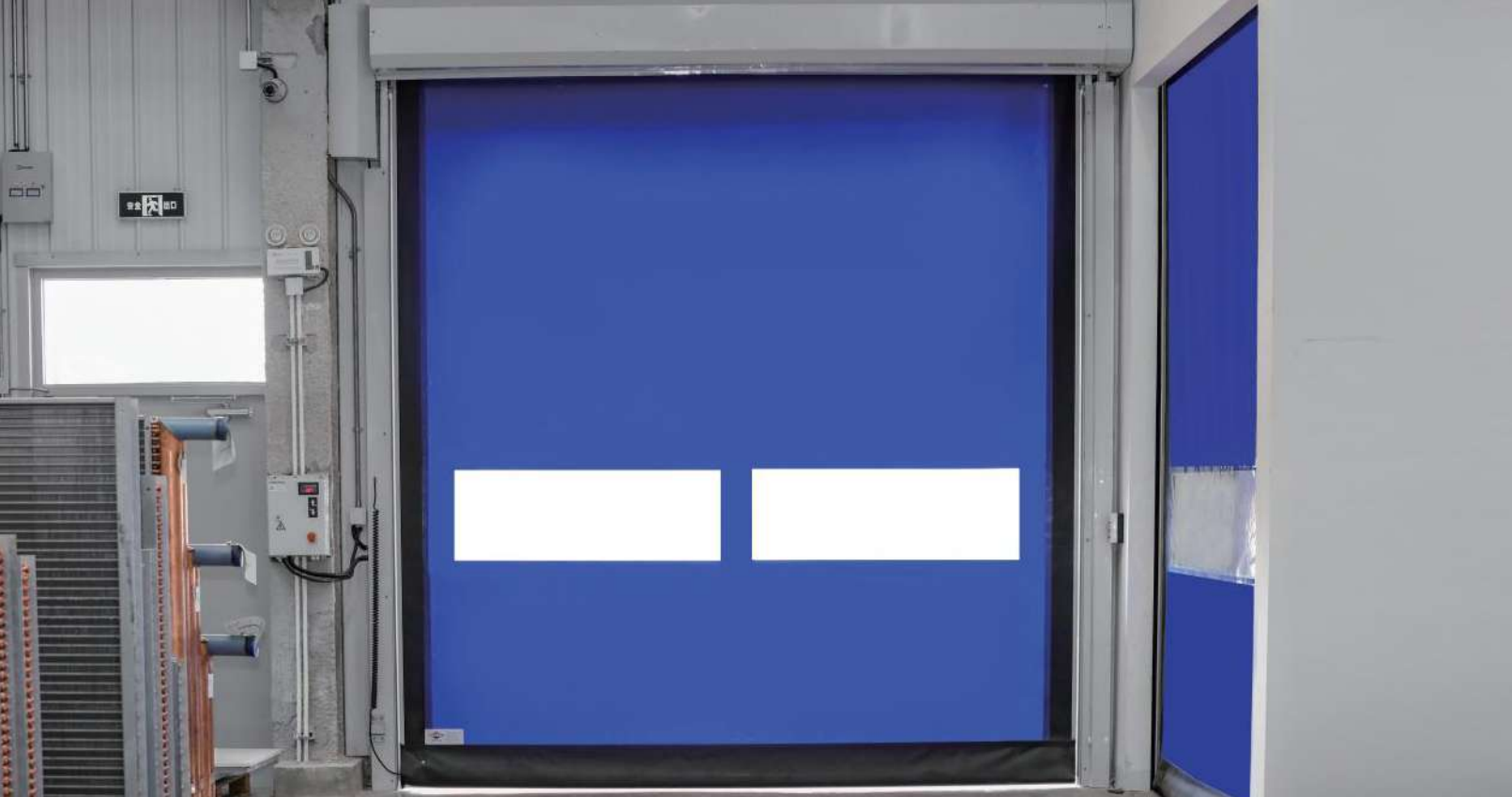
HSR-IPB INTERIOR HIGH SPEED ROLLING SHUTTER DOOR

>>> TECHNICAL PARAMETERS

- HSR-IPB interior high speed rolling shutter door open and close quickly, shortening the opening time of entrances and exits, and facilitating the creation of a safe, clean and energy-saving working environment.
- The door curtain is structured by segments connected by aluminum alloy wind-resistant profiles, which is equipped with airbag protection at the bottom. When encountering obstacles, it can rebound against resistance to ensure the safe passing of people and goods.
- It is suitable for applications where frequent and rapid opening is required and a clean environment needs to be ensured.
- Typical application industries: automobile manufacturing, food, medicine, electronics, etc.

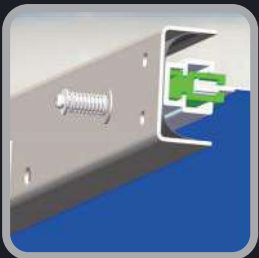
Optional Requirements	Specifications
Door dimensions	Min. 1,000 mm x 2,000 mm (3'3" x 6'7") (W x H) Max. 6,000 mm x 6,000 mm (19'8" x 19'8") (W x H)
Opening speed	1.0 m/s (standard) 1.2 m/s (optional)
Door curtain	0.8 mm/1.2 mm/1.5 mm/1.8 mm/2.0 mm, PVC
Window	1.2 mm/1.5 mm/2.0 mm, PVC
Track seal	Brush
Wind-resistant bar	Aluminum alloy profile
Motor cover	Standard
Winding shaft cover	Standard
Door curtain color	Blue/Yellow/Orange/Grey
Track color	RAL 9002 (Grey White)/RAL 7015 (Slate Grey)/Stainless steel/Customized
Installation position	Interior
Door opening options	Remote control/Three control buttons/Geomagnetic sensor/Radar/Pull cord switch/Device interconnection
Service life	More than 1 million cycles
Wind resistance level	115 Pa (door opening area $S \leq 16 \text{ m}^2$); 35 Pa ($16 \text{ m}^2 \leq \text{door opening area} S \leq 36 \text{ m}^2$)

▲ **HSR-IPB Interior High Speed Rolling Shutter Door**
**High Cost-effective, Improving Indoor
Environment & Traffic Efficiency**



Dual Drive Shaft Design

The drive gear disk on the main drive shaft is used for rapid lifting of the curtain. The auxiliary shaft together with the balance weight is used to tighten the curtain, which is thus always in a tightening state.



Excellent Sealing Performance

HSR-EPB exterior high speed rolling shutter door adopts special curtain and track precision design so that it has strong sealing and wind resistance.

HSR-EPB EXTERIOR HIGH SPEED ROLLING SHUTTER DOOR

ANTI-COLLISION RESET SAFE & EFFICIENT

SAFETY & EFFICIENCY DESIGN, EMBODIED IN EVERY DETAIL

- The integral curtain fabric design is adopted for anti-collision high speed doors. The special curtain structure has excellent wind resistance and sealing performance.
- The innovative soft bottom edge design with anti-collision reset function can avoid accidents, which greatly reduces the door curtain damage caused by accidental collision, and reduces the maintenance cost.
- It can be used as either an external or internal door, for applications that require frequent and fast opening and clean environment.
- **Typical application industries:** automobile manufacturing, food, medicine, clean plants, purification workshops, etc.

>>> TECHNICAL PARAMETERS

Optional Requirements	Specifications
Door dimensions	Min. 1,500 mm x 2,000 mm (4'11" x 6'7") (W x H)
	Max. 5,000 mm x 5,000 mm (13'5" x 13'5") (W x H)
Opening speed	1.5 m/s
Door curtain	1.2 mm, PVC
Window	1.5 mm, PVC
Curtain type	Entire curtain
Motor cover	Standard
Winding shaft cover	Optional
Door curtain color	Blue/Yellow/Orange/Grey
Track color	RAL 9002 (Grey White)/RAL 7015 (Slate Grey)/Stainless steel/Customized
Installation position	Interior/Exterior
Door opening options	Remote control/Three control buttons/Geomagnetic sensor/Radar/Pull cord switch/Device interconnection
Service life	More than 1 million cycles
Wind resistance level	Max. 350 Pa



Anti-collision Reset Design

The design of the soft bottom edge enables it to be automatically detached from the track when the door curtain is accidentally hit, and automatic reset can be realized to avoid accidents.



Soft Bottom Edge Design

The integral soft bottom edge design and built-in conductive rubber enable automatic rapid rebound against resistance during operation.

▲ The unique soft bottom edge design guarantees the safety of the door when operating at high speed, and the anti-collision reset function makes the factory operation more efficient!



**HSR-SPB
HIGH SPEED STACKING DOOR**

**STRONG WIND RESISTANCE
SUITABLE FOR LARGE SIZE DOORWAY**

**THERMAL INSULATION
SAFE & EFFICIENT**

**HSR-IPM HIGH SPEED
INSULATED ROLLING SHUTTER DOOR**

- HSR-SPB high speed stacking door adopts high-strength lifting belt to open the curtain by folding upwards.
- HSR-SPB high speed stacking door has good wind resistance performance, for which the horizontal spaced metal wind resistant column is used. Different specifications of profiles are selected according to the width of the door body, and even large sizes have high wind resistance.
- It is suitable to be used as external doors for logistics channels with large-sized openings and high windproof requirements.
- Typical application industries:** machinery manufacturing, underground garages, large-scale logistics channels, etc.

>>> TECHNICAL PARAMETERS

Optional Requirements	Specifications
Door dimensions	Min. 1,500 mm x 2,000 mm (4'11" x 6'7") (W x H) Max. 8,000 mm x 9,000 mm (26'3" x 29'6") (W x H)
Opening speed	0.6-1.2m/s
Door curtain	0.8mm/Customized, PVC
Window	Optional
Curtain type	Entire curtain
Motor cover	Standard
Winding shaft cover	Optional
Door curtain color	Blue/Yellow/Orange/Grey
Track color	RAL 9002 (Grey White)/RAL 7015 (Slate Grey)/Stainless steel/Customized
Installation position	Interior/Exterior
Door opening options	Remote control/Three control buttons/Geomagnetic sensor/Radar/Pull cord switch/Device interconnection
Service life	More than 1 million cycles
Wind resistance level	Max. 450 Pa

According to the requirements of different wind-resistant grades, different specifications of wind-resistant ribs can be selected to the requirements of various application environments. ▲

- HSR-IPM high speed insulated rolling shutter door is designed with the insulated curtain, which has certain Insulation function. It can be used in a low-temperature environment to reduce energy loss, preserve heat, prevent fog and reduce air condensation when the air cools.
- The innovative soft bottom edge design with anti-collision reset function can avoid accidents, which greatly reduces the door curtain damage caused by accidental collision, and reduces the maintenance cost.
- Typical application industries:** food, medicine, cold storage, etc.

During loading and unloading, 80% of the energy loss results from air convection when opening the door, and reducing the time for door opening and closing will greatly reduce such energy loss. ▲

>>> TECHNICAL PARAMETERS

Optional Requirements	Specifications
Door dimensions	Min. 1,500 mm x 2,000 mm (4'11" x 6'7") (W x H) Max. 5,000 mm x 5,000 mm (13'5" x 13'5") (W x H)
Opening speed	1.5m/s
Door curtain thickness	10-12mm
Door curtain material	1.2 mm double-layer PVC curtain with aluminum foil Insulation filling
Window	1.5 mm, PVC
Curtain type	Entire curtain
Motor cover	Standard
Winding shaft cover	Optional
Door curtain color	Blue/Yellow/Orange/Grey
Track color	RAL 9002 (Grey White)/RAL 7015 (Slate Grey)/Stainless steel/Customized
Installation position	Interior/Exterior
Door opening options	Remote control/Three control buttons/Geomagnetic sensor/Radar/Pull cord switch/Device interconnection
Service life	More than 1 million cycles
Wind resistance level	Max. 350 Pa



Solving the Insulation and Sealing Challenges of Cold Storage Doors from All Aspects

German Imported Electrical Control System

The HSR-IPP Cold Storage High Speed Door is configured with a servomotor system. With a maximum opening speed of up to 2.0 m/s, it minimizes the exchange of hot and cold air, saving refrigeration energy while ensuring high efficiency and stability.

Elastic Thermal-Insulated Door Curtain

Fastlink's latest development includes an elastic thermal-insulated door curtain with a uniform curtain thickness (28mm(1.1")). Not only does it resist accidental collisions, but it also provides excellent thermal insulation, preventing energy loss.



HSR-IPP COLD STORAGE HIGH SPEED ROLLING SHUTTER DOOR

High speed opening and closing, Thermal Insulation and sealing, Anti-collision reset

SAFETY & EFFICIENCY DESIGN, EMBODIED IN EVERY DETAIL

- Newly developed HSR-IPP cold storage high speed rapid roll door, the maximum opening and closing speed of the HSR-IPP cold storage rolling shutter door can reach up to 2.0m/s, making it suitable for cold storage passageways with temperatures above -25°C that require frequent access.
- The door body features an elastic thermal Insulated curtain design, providing excellent thermal insulation and sealing performance. When used in low-temperature environments, it effectively reduces energy loss, offers insulation, fog resistance, and prevents condensation when cold air meets warm air.
- Innovative soft bottom edge with anti-collision and self-resetting function, which helps prevent safety accidents and significantly reduces accidental collisions that could damage the curtain, thus lowering maintenance costs.
- Typical application industries: cold chain logistics, food central kitchen, pharmaceutical and other refrigeration and refrigeration entrances.

>>> TECHNICAL PARAMETERS

Optional Requirements	Specifications
Door dimensions	Min. 1,200 mm x 2,000 mm (3'11" x 6'7") (W x H)
	Max. 3,000 mm x 4,600 mm (9'10" x 15'1") (W x H)
Opening speed	Max. 2.0 m/s
Door curtain thickness	28 mm
Door curtain material	Double-layer high-tensile-strength curtain with internal insulation filling
Thermal conductivity (K-value)	1.2 W (m².K)
Curtain type	Entire curtain
Door curtain color	Blue
Track color	RAL 7015 (Slate Grey)/Stainless steel/Customized
Door frame structure	Optional
Air curtain	Optional
Heating wires	Optional
Door opening options	Remote control/Three control buttons/Geomagnetic sensor/Radar/Pull cord switch/Device interconnection
Wind resistance level	Max. 225 Pa
Service life	More than 2 million cycles
Operating environment	Cold storage (temperature ≥ -18°C)

Outstanding Sealing Performance

The door curtain's front, rear, and top sections feature multiple sealing measures and a specially designed spherical sealing structure. Imported self-limiting temperature heating wires are incorporated into the spherical sealing to prevent icing and frost on the door curtain and tracks, making it suitable for freezer environments.

Multiple Safety Protection Measures

It includes an emergency manual door-opening system to ensure temporary access during emergencies. The elastic soft bottom edge design prevents accidental damage caused by the door's movement. The heating wire temperature control warning system continuously monitors the heating wire's status.

Smart Control

Equipped with the state-of-the-art "Eye of the Future" control box, it exudes a futuristic and high-quality feel. It enables precise positioning of the door, monitoring of operational status, temperature control adjustments, fault alerts, and comprehensive control functions.

High Efficiency and Energy Savings

Rapid operation and exceptional thermal insulation and sealing performance help cold storage facilities save on refrigeration electricity costs, reducing energy consumption and emissions. It can save users nearly 100,000 RMB in electricity bills annually.





▲ **HSS-DEY Cold Storage High Speed Sliding Door**
Full digital control, High speed start, Safe sealing



HSS-DEY COLD STORAGE HIGH SPEED SLIDING DOOR

**HIGH-SPEED & THERMAL
MAINTENANCE-FREE**

>>> TECHNICAL PARAMETERS

- The opening speed can reach 2.5m/s, which greatly reduces the opening time and the convection of hot and cold air compared with other cold storage doors, realizes minimum energy loss and effectively improves work efficiency.
- The flexible door panel design can resist the impact of strong external force and realize automatic reset afterwards. It is maintenance-free and durable.
- The unique sealing device between the door panel and the opening and the adjustable sealing design at the bottom of the door can ensure high sealing performance surrounding the door body and satisfy the strict cold storage application environment.
- **Typical application industries:** food, medicine, cold storage, etc., with the single door used for low-temperature cold storage.

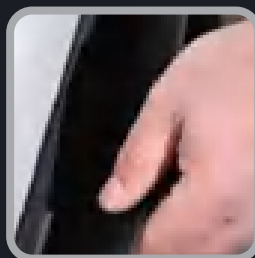
Optional Requirements	Specifications
Door dimensions (Single Leaf)	Min. 1,300mm * H2,000mm(4'3"W * 6'7"H) (W x H) Max. 2,800mm * H4,600mm(9'2"W * 15'1"H) (W x H)
Door dimensions (Single Leaf)	Min. 1,800mm * H2,000mm(5'11"W * 6'7"H) (W x H) Max. 4,000mm * H4,600mm(13'1"W * 15'1"H) (W x H)
Opening speed	Max. 2.5m/s
Door curtain thickness	100mm (3.9")
Door curtain material	Double-layer high-tensile-strength curtain with internal insulation filling
Thermal conductivity (K-value)	0.6W (m².K)
Curtain type	Single door Double door
Door curtain color	Blue
Door frame structure	Optional
Air curtain	Optional
Heating wires	Optional
Door opening options	Remote control/Three control buttons/Geomagnetic sensor/Radar/Pull cord switch/Device interconnection
Service life	More than 2 million cycles
Operating environment	Cold storage (temperature ≥ -25°C)

Only one Fastlink cold-storage high speed sliding door can solve all kinds of problems in customers' use, improve operation efficiency and save more energy for customers.



High Speed Start

The opening/closing speed of up to 2.5m/s accelerates the logistics speed, improves the working efficiency and reduces energy consumption.



Safety Seal

The adjustable EDPM rubber seal strip at the bottom is easy to adjust and replace, ensuring that the surrounding of the door body is completely watertight and airtight and heat transfer is truly blocked and cool air prevented even in the extremely cold environment.

SAFETY & EFFICIENCY DESIGN, EMBODIED IN EVERY DETAIL



Thermal-insulation Door Body

- The third-generation waterproof insulating core, with a thickness of 100 mm, provides a door panel heat transfer coefficient of $K = 0.6 \text{ W(m}^2\cdot\text{K)}$ and offers more than four times the insulation performance of standard door curtains.
- A single door is sufficient for -25°C cold storage, providing insulation, preventing heat loss, and saving energy.



Frost and Penetration Prevention

- A self-regulating maintenance-free heating device is available, with a maximum temperature of 65°C .
- Dual-channel temperature control system offers triple safety protection.



Efficient passage and energy saving

- The maximum opening speed reaches 2.5 m/s. The excellent performance of high-speed opening and closing greatly reduces operating energy consumption. A single door can save approximately RMB 70,000 in electricity costs per year.



Anti-collision

- The door panel adopts flexible materials with no metal components, providing excellent resilience and impact resistance.



Full Digital control

- Self-developed "Eye of Technology" control system .
- IP65 protection rating .
- Integrated wiring harness design .
- Rich in interfaces.



Single-door solution

- Adopting an advanced non-airlock design, it replaces the traditional multi-door combination, reducing purchase and maintenance costs while saving warehouse space.

MOTOR CONTROL SYSTEM & COLOR CARDS

The high speed door has an opening speed several times higher than the ordinary industrial door. Thus, the quality of the motor and control system directly affects the reliability of the whole door body. The motor and control systems of the high speed door are reliable products through long-term tests, providing a lasting guarantee for the door operation.

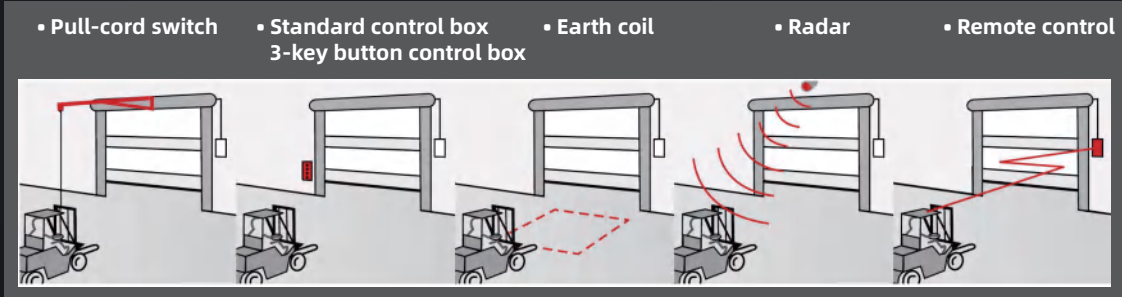
FASTLINK'S STRATEGIC PARTNERS

Since its establishment in 2004, Fastlink has already become a strong brand in the industry and won trust and recognition of customers in many industries and fields with excellent product quality and perfect service support. It maintains good partnership with well-known enterprises such as GLP, Vanke, ESR, Goodman, Mapletree, Yuepei, Ping An Properties, Sinotrans, Shenzhen International, JD.com, Cainiao, Hema, Meituan, GFS , Mercedes-Benz, BMW, Geely, Bayer, BASF, Intco Medical, CATL, Huayou Cobalt.

Motor Selection and Specifications

Parameters	Motor model	Electric System (Room Temperature)	Electric System (Low Temperature)
Power supply		3-phase 220 V 50 Hz	3-phase 220 V 50 Hz
Motor rotation speed		140 RPM	140 RPM
Rated frequency		1.5 kW	1.5 kW
Rated current		6.8 A	6.8 A
Rated motor shaft torque		90 N.m	90 N.m
Shaft diameter		25.4 mm	25.4 mm
IP rating		IP54	IP54
Operating temperature		-10°C ~ +40°C	-25°C to +40°C
* Special consultation is required for special protection grade and working conditions			

Control Opening Mode





FASTLINK'S ADVANTAGES

 **WE PROMISE TO
PROVIDE MORE DURABLE SECURITY**

Fastlink After-sales Advantage

- Security Provision** Professional team, original accessories, liability tracing system
- Quick Response** Far above the industry level
- Scientific Data Management System** Any maintenance data is traceable, and we strives to continuously optimize our service capabilities
- More Economical Maintenance Package** Cover all consumable replacement and maintenance items

Providing Third-party Additional Protection

Fastlink has purchased third-party insurance for each product and for each on-site after-sales staff, providing you with double protection and removing worries for you.

Product Accident Insurance
At the customer's site, any property loss or personal injury caused by Fastlink products shall be settled by the third party insurance.

Personal Accident Insurance
Any personal injury accident caused by the employees of Fastlink shall be settled by the third party insurance during the on-site work of the customers.

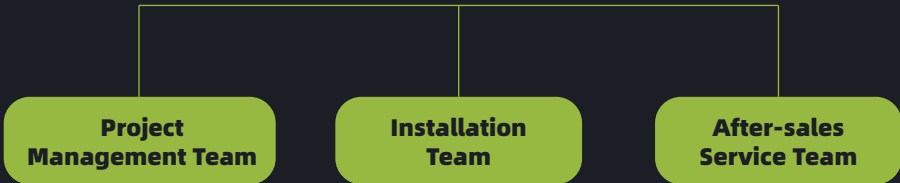
Providing Maintenance Packages Of Different Specifications After The Warranty Period

SERVICE

Compared with the layout of the sales network, Fastlink attaches more importance to the fulfillment and delivery of orders and the after-sales guarantee of products.

Since the establishment of the company, we have passed on the after-sales service gene, and the three service teams have been constantly expanding the localization to achieve the service guarantee of rapid response.

Fastlink has nationwide distribution of



- Shanghai
- Kunshan
- Suzhou
- Changzhou
- Zhejiang
- Hefei
- Fujian
- Guangzhou
- Wuhan
- Shenyang
- Tianjin
- Shandong
- Beijing
- Hebei
- Zhengzhou
- Xi'an
- Chengdu
- Chongqing
- Guiyang
- Huhehaote



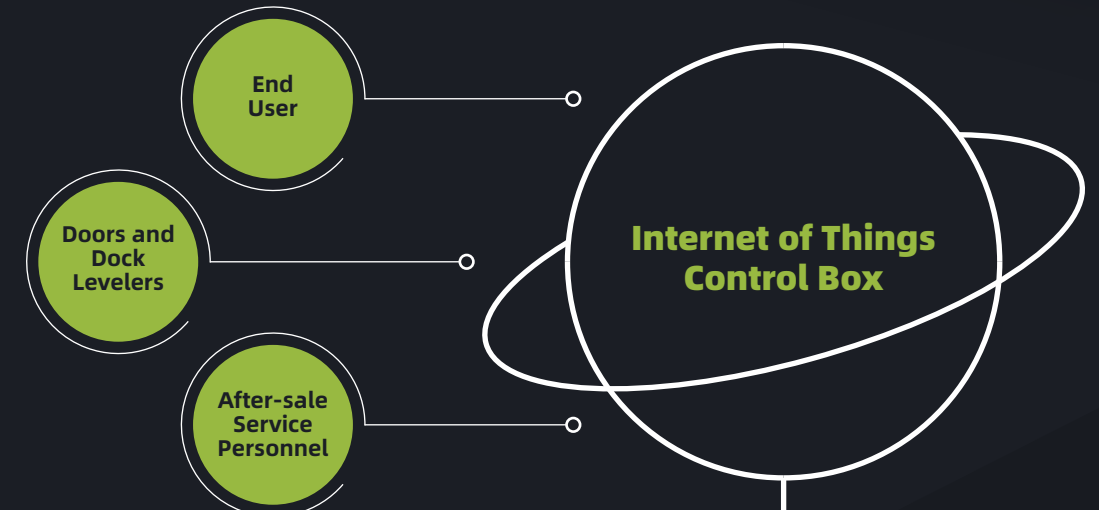
INFORMATION MANAGEMENT

Fastlink takes the lead in investing resources to establish an intelligent service management platform, and continuously launches service functions such as efficient inquiry of orders for customers and one-click report for repair and customer evaluation on the mobile phone, so as to realize end-to-end service that starts with customer demand and ends with customer satisfaction.



TECHNICAL SERVICE

Fastlink initiates the world's first Internet of Things Control Box (national invention patent), realizing system interconnection and turning passive service into active service.



1 Customer Service Terminal QR Code Repair Report

Customers can scan the QR code with the mobile phone to quickly report for repair, inquire the contact information of the assigned after-sales engineer, and check the whole service process in real time.

Fastlink distributes task orders on APP to the nearest after-sales service engineers, realizing data management from the assigning to the completion of the repair. Customers can evaluate the service on the mobile phone, which always reflects the business philosophy of customer first.

2 Cloud Platform

The cloud platform can display the usage status of warehouse products in real time (running times, fault information, real-time uploading).

Authorized customers can check the usage of all projects in the country from the system, and accurate data analysis for equipment repair and maintenance are provided to customers.

The system can connect with the customer park management system and realize the management goal of an intelligent park.

